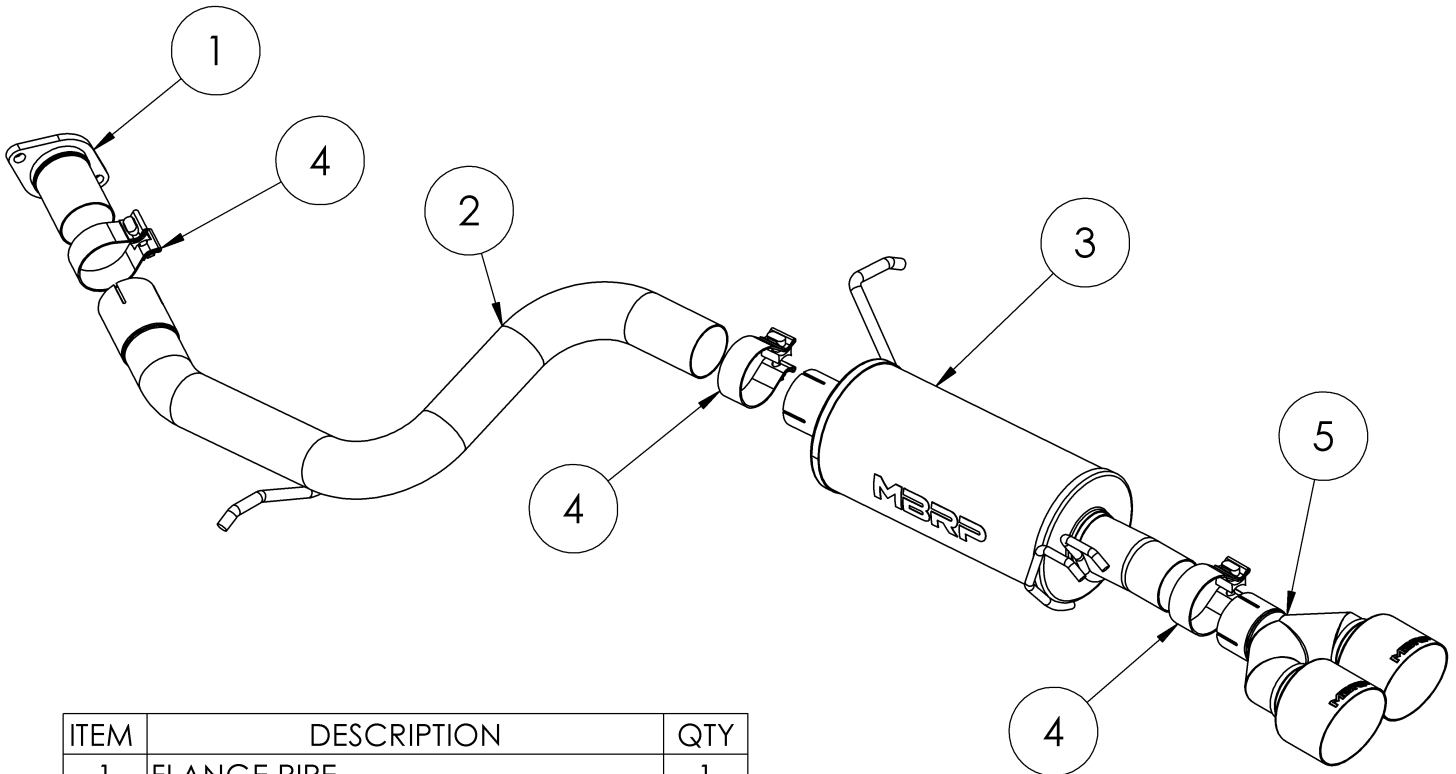


# S5700

2020-2025 KIA TELLURIDE,  
2020-2025 HYUNDAI PALISADE,  
REPLACES SYSTEMS WITH FACTORY TIPS,  
3.8L, AXLE BACK, 2.5" SINGLE REAR

# MBRP®



ITEM	DESCRIPTION	QTY
1	FLANGE PIPE	1
2	UNDER-AXLE PIPE	1
3	MUFFLER ASSEMBLY	1
4	2.5" CLAMP	3
5	PASSENGER-SIDE TIP	1

Refer to this **LOT NUMBER** when contacting customer service: \_\_\_\_\_

## PLEASE READ BEFORE STARTING INSTALLATION

While MBRP has made every effort to ensure that all components of this system are of superior quality and properly packaged, it is the installer's responsibility to ensure the following before removal of the factory exhaust:

- that ALL components shown above are present.
- that ALL mating components fit together.
- that there are no damaged components.
- that the system you have purchased is appropriate for your vehicle year, model and configuration.
- that the system will not interfere with any modifications previously installed or planned.
- that you have read and understand these instructions.

If you have any questions or are uncertain about any aspect of the installation of this system to your vehicle please contact your dealer before commencing installation.

# MBRP

## Removal of Stock System



Figure 1



Figure 2

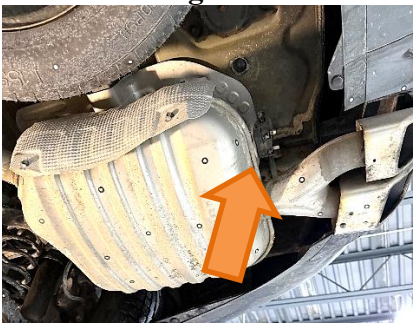


Figure 3



Figure 4

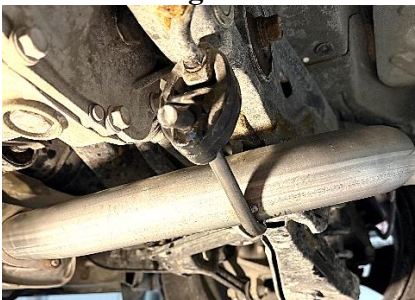


Figure 5

1. Apply penetrating lubricant liberally to all exhaust fasteners, hangers, and rubber insulators.
2. Remove the two nuts securing the factory muffler assembly. Retain the nuts for installation  
**Refer to Figure 1.**
3. With the rear of the exhaust system supported, remove the factory insulators from the vehicle. Retain the insulators for the installation.  
**Refer to Figure 2 and 3.**
4. Remove the factory muffler assembly from the vehicle.

## Installation of **MBRP** Performance Exhaust

1. Using the factory nuts install the **Flange Pipe** onto the factory flange connection. Align the flanges to centre the pipe connection.  
**Refer to Figure 4**
2. Reinstall the factory insulator onto the **Under-Axle Pipe**.
3. Using a **2.5" Clamp**, loosely install the **Under-Axle Pipe** onto the **Flange Pipe**. Reinstall the factory rubber insulator onto the vehicle.  
**Refer to Figure 5.**
4. Reinstall the front most factory insulator onto the **Muffler Assembly** and rear factory insulator onto the vehicle.
5. Using a **2.5" Clamp**, loosely install the **Muffler Assembly** onto the **Under-Axle Pipe**. Reinstall the rear factory rubber insulator onto vehicle then onto the **Muffler Assembly**.  
**Refer to Figure 6 & 7.**
6. Using a **2.5" Clamp**, loosely install the **Tip** and adjust to your liking.  
**Refer to Figure 8**

# MBRP



**Figure 6**



**Figure 7**



**Figure 8**

7. Carefully align the system and tip. Align the edge of each band clamp with the edge of the joint it is connecting. Tighten all hardware and clamps, starting at the front and working rearward to secure the system. Check along the full length of the exhaust system to ensure there is adequate clearance for fuel lines, vent lines, brake lines, frame, bodywork, suspension and any wiring, etc. If there is any interference detected, relocate or adjust to provide adequate clearance. Ensure all clamp connections are secure and components are unable to rotate or slide. Band clamps (excluding tip hardware) require approximately 45 lb-ft (60 N-m) of torque. Verify clearances, system security and band clamp torque after 30-60 miles (50-100 km) of driving.



**Congratulations!** You are ready to begin experiencing the improved power, sound and driving experience of your **MBRP** Performance Exhaust. We know you will enjoy your purchase!